

sparc

Small Business.
Professional Development,
Application, Resources,
Certification

Community Incubator & Coworking Space

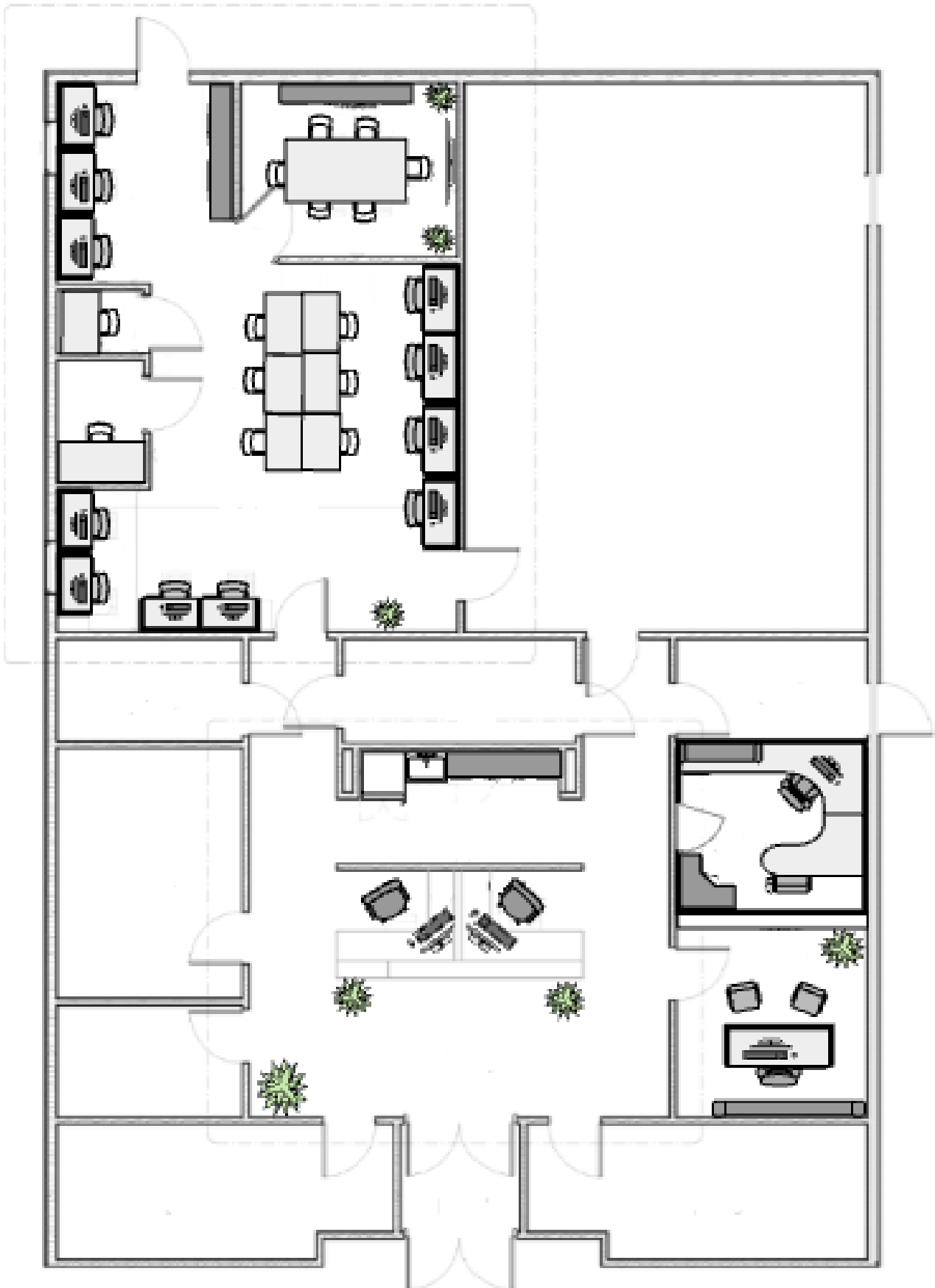
MEMBERSHIPS & PASSES



UtahStateUniversity
Blanding



Schedule a tour



Community Incubator & Coworking Space

MEMBERSHIP

A professional atmosphere and thoughtfully designed workspace include an on-site reception conference and presentation rooms that provide a professional backdrop for businesses to meet with clients.

Access to a functional workspace consists of a desktop or laptop check-out, internet, headset, and up to 100 copies from our media center each visit.

The additional benefit consists of the organic collaboration with colleagues and a community with other business owners.

\$150/Monthly



Remote Workplace RESIDENT TRAINING PASS

The resident training pass is the game-changer for our local residence. Membership gives access to reliable high-speed internet vital to obtaining the training, a short-term rental to desktop or laptop, headset, workspace, and up to 10 copies a visit from our media center.

High-paying tech jobs can be performed anywhere, as long as employees have access to high-speed internet to connect with coworkers and clients virtually.

Jobs moved to online is a solution that provides a sustainable, efficient, balanced mode of work.

\$5/Day Pass

\$45/Month Pass





Economic Resilience

SPARC, San Juan County Economic Development, Blanding City, and San Juan County Chamber of Commerce collaborated to develop the following membership packages to address specific economic resilience issues and creates a bridge between rural and urban expertise.

application required
& pricing varies with services

ARTISAN MEMBERSHIP

San Juan's local artisans will receive the knowledge and skills needed to address the urgent need to become established businesses and the education to develop an online presence and global sales.

START-UP MEMBERSHIP

The success rate of an emerging startup, small business, or growing business improves in the first year because of access to coaching, education, and mentorship through that year.

SMALL BUSINESSES MEMBERSHIP

Providing expert assistance can be a challenge to rural areas. Providing and connecting our rural businesses with a network of expertise is needed to develop businesses and bring jobs back to the area.



Virtual Office MEMBERSHIP

Build your presence fast, anywhere. Our virtual office location, so you can represent your business professionally – wherever you need to be. Building a business from home, but want to keep your home secure?

Unable to use a PO box for your business need. The Virtual Office is the perfect option.

Our virtual office package includes a business address, onsite mail delivery, and an annual 48-day punch pass card.

\$780/Yearly

